

wsa art Art Connections

WAIKATO SOCIETY OF ARTS

P.O. Box 1018, Hamilton 3240. Website: www.wsa.org.nz

CREATING ART CONNECTIONS

In the six weeks since I have taken over the role of president it has been exhilarating and exhausting as I got up to speed on the projects begun under Brenda's presidency, made application for funds, and put forward proposals to ArtsPost for exhibitions next year.

The 75th anniversary year is going to be interesting and exciting with activities taking place throughout the year. Though not all plans are in place I hope that at the AGM, I can give you a nearly complete schedule for the year with room in it for new ideas.

For 75 years WSA has contributed significantly to the development of the arts in the Waikato. We will continue supporting artists, helping more people make art and educating the community about art in all its glorious variety. And we will continue to make a significant contribution to the visual arts in the Waikato. Our 75th anniversary is an opportunity for development of the WSA in size and scope.

Come to the AGM on October 14 to be part of it. We need people to stand for the executive committee; we need volunteers for other committees and activities. John Adams has volunteered to take on the role of treasurer. He has extensive business experience and since retiring has an extensive CV of working in community organisations.

WSA is now "Creating Art Connections" by reaching out to other groups. We want to continue and strengthen our relationships to business, Wintec, Arts Waikato, HCAC, the museum, galleries; we want to reach out more effectively to groups in our community such as youth; we want to co-operate with other art groups to make the arts stronger.

The centrepiece of the anniversary will be the art and history exhibition mounted by the Waikato Museum compiled with the advice of our patron Joan Fear who was president at the 50th anniversary. The museum exhibitions runs from late March til November and a number of activities are planned in conjunction with it.

There will be at least three exhibitions, as well as our two awards and some gatherings of members to celebrate our achievements and honour our stalwarts. We are planning some surprises as well.

The recent lease of a photocopier with the capability of high quality colour reproduction means that we can produce high quality marketing materials at lower cost. Three new brochures with the WSA 75th branding designed by Mark Curtis will target specific areas for our development project.

Our 75th anniversary is an opportunity for the development of the WSA both in attracting new members and increasing our scope. We are looking for a co-ordinator to work alongside the executive to co-ordinate our development activities. This position is a contract for one year. This is an exciting year for WSA.

MARTHA SIMMS

INDIGENOUS



Joan's invite said booze
There were drinking hands
And talking heads
People inhabited

This happy forest
Later alone
Birds sang to me
Trees sighed

I heard the movement
Of a friendly stream
Red berries fell
Beneath the canopy

BLS



WHAT'S ON?

ARTSPOST GALLERIES

26 September 27 October
Opening Thursday 25 September at 5.30pm

Crossing Over

Bev Truloff and Deb Hinde
New Mixed media works

Casting Concepts, A group exhibition of glass works

Ice flow forms by Colleen Ryan-Priest, Milly and Molly's by Di Tocker and Bronze and Glass by John Taris.

Emerge

Karin Barr and Jo Pervan
Acrylics and Stone Sculptures

Bowler Hat Series

Janene Sullivan
Exhibition of Bronze Sculptures
120 Victoria Street, Hamilton
Open 10am - 4.30pm daily

AT THE MUSEUM

Cursive Line: Adele Younghusband

16 August - 30 November

This exhibition explores Adele Younghusband as a significant figure in the history of New Zealand Modernism in the 20th century.

Waikato Trust National Contemporary Art Awards 23 August - 30 November

An exhibition featuring the work of the talented finalists in this year's prestigious, national award. Selected by renowned judge Natasha Conland of the Auckland Art Gallery, this year's selection of New Zealand's finest contemporary art promises to amaze and inspire.

WSA AGM

The WSA 2008 Annual General Meeting will be held at the Waikato Museum Lecture Theatre on Tuesday, 14th October at 7.30 pm.

Agenda

- Apologies
- Previous Minutes
- Presidents Report
- Financial Report
- Art School Report
- Awards Report
- Membership Subscriptions
- Election Of Officers
- General Business

The meeting will be followed by a social hour.

JOIN THE TEAM - HAVE FUN AND GET CREATIVE!

Like art, teamwork requires creativity, passion and commitment. The WSA, like many organisations, suffers from the diminishing time people feel they can volunteer. We all know that many hands make light work and there are many rewards in working in a team to create plans and implement projects.

The WSA Sub-Committees develop their plans for the coming year and provide an outline (and budget where relevant) to the Executive. The Sub-Committees undertake the various activities, with the support of the Executive and other volunteers.

Exhibitions; Art Awards; Marketing & Membership Art School; Funding; Events & Social.

If you are keen to participate in any of the sub-committees, please contact Eriko in the first instance - ph 8394481 or email wsa@wsa.org.nz.

We are calling for members to form an Exhibitions Sub-Committee now so that ideas for exhibitions for our 75 th year can be formed and a plan prepared. Venues need proposals soon to secure dates.

'WAIPRINT'

'03 October - 24 October 2008

Guest artist: Stephanie Chalmers

Opening Celebration 5 30 pm Friday 3rd October All Welcome.

Thornton Galleries, 298 Barton St, Hamilton, Phone 839 1325.

DRYPOINT WORKSHOP

Stephanie Chalmers - Tutor

Sunday 5 October 2008 10-4 pm

At ArtsPost in the Basement Printmaking Studio - details in last newsletter.

WaikatoDFAS

Waikato Decorative and Fine Arts Society

INTRODUCTORY LECTURE

The Shakers

their beliefs, architecture and artifacts

JOHN ERICSON.

BA (HONS) CERT.ED. M.ED

7:30PM, THURSDAY 6 NOVEMBER 2008

CENTRE FOR PERFORMING ARTS

SOUTHWELL SCHOOL

200 PEACHGROVE ROAD. HAMILTON



I wish to attend the Introductory Lecture and require

..... tickets @ \$30.00 each.

I am unable to attend the Introductory Lecture but am

interested in becoming a subscription member.

Please circle Dr / Mr / Mrs / Ms / Other.....

Last Name/s:

First Name/s:.....

Address:

Post Code:..... Tel:

Email:

Cheques to be made payable to WaikatoDFAS and mailed to:

WaikatoDFAS
PO Box 688
Cambridge 3450

MEMBER'S SHOWCASE ...

Margaret Porter

Margaret has been a member of WSA since 1967. She served on the committee in the 70's and has been a volunteer ever since.

Her early training was at Canterbury University School of Art where Rata Lovel-Smith had most influence, then in Hamilton Paul Van Den Bergh inspired her to go further.

Overseas tutors were Patrick Heron - England, James Gahagen from America and John Firth-Smith of Australia, who have all contributed to her numerous



awards. She is always expanding her horizons to enjoy the creativity that different mediums give.

Margaret has tutored at WSA. She participated in the International Art Workshop Techmakers 1991. N.Z. winner Rotoart National Gallagher Art award and 1986 winner Whakatane Shell Art award 2003 winner Waikato Winter Show Art award as well as a finalist in the 2000 National Contemporary Art Award. Work in private, public, and corporate collections, including Waikato Museum of Art and History and 10 One Women exhibitions. Works in oil, watercolour, sculpture, and mixed mediums.

THE ACTION FRONT – Museum Exhibition for 75th Anniversary

We are a bit short of information from 1980's to 1990's - specifically around the times of the shift from Studio Gallery (Clarence St) to Ward St Park and WSA Gallery Victoria St. Winter is a good time to clean out cupboards and sort the many things we accumulate over the years. If you discover items that could be incorporated in the exhibition, please phone Joan Fear on 07 855 9592.

Gordon Harris

THE ART & GRAPHIC STORE

Hamilton

10% Discount For WSA Members
(Conditions Apply)

NZ's Largest Range Of Art & Design Materials



386 Anglesea Street, Hamilton
Tel: 07 834 3952 Fax: 07 834 3958
Email: hamilton@gordonharris.co.nz
Open 7 Days. Free Customer Parking.
www.gordonharris.co.nz

Ever Heard of Waitakaruru? It's Above the Herd.

What do you do with a hole in a hill? Lets make it more difficult. What do you do with a big hole in a big hill, filled with gorse, blackberry, pampas, rubble and no topsoil? Answer: Work like hell to fill it with 18,000 plants, lots of sculpture, walking paths, imagination and two lakes of good honest sweat.

That is what John and Dorothy Wakeling have done at Waitakaruru at 207 Scotsman's Valley Rd. Back in 1991 they discovered the old disused quarry situated in 42 acres of hillside. They realised

its potential and proceeded to do the landlubber equivalent of yachties standing under a cold shower ripping up \$20 notes – in other words, flagellating themselves with blackberry and gorse (sometimes in the rain), while ripping up large denomination notes – even worse, they have had to contend with droughts undoing much of their hard work.



The persistence has paid off at Waitakaruru and it has all come together. Not only do we have a magnificent arboretum but an ever-changing sculpture park.

There are two large lakes, one at the bottom of the hill, the other further up filling the big hole in the hill and a couple of small ponds and waterfalls. The lake with its backdrop of

the old quarry cliffs makes a great site for the concerts that are held there. From most places in the arboretum you can look out over the rich Waikato farmland (and the herds) to the outline of Pirongia.



There are over two kilometres of tracks (some wheelchair accessible) winding through the plantings and sculptures. Got visitors coming from afield? This is a great place to take them on a fine day and skite off the Waikato. The arboretum is also offered as a venue for weddings.

Sections of the plantings include a fernery and NZ bush gullies, American, Latin American, Asian and Australian groupings. Native birds are also visitors to the arboretum. There is a succulent garden where some of the smaller sculptures and glass works are displayed.

At the entrance is an ample car park and nearby a shelter for

picnicking or painting or sculpting by prior arrangement.

Nearby is a small café operating in the warmer months between September and May (inclusive). Morning and afternoon teas can be purchased at the café and by prior arrangement John and Dorothy can organise lunches for larger groups.

The park has been open every day since 2004. The sculpture is organised by the Waikato Sculpture Trust. A number of sculpture exhibitions have been curated over the years including some themed exhibitions such as cast glass and larger installations by Gaye Jurisich.

There are three new sculpture exhibitions each year. Several concerts (Jazz choirs), "Opera in the Quarry" and others events have been held in the past and more are planned.

The Arboretum has been awarded the prestigious Garden of Regional Significance status from the New Zealand Garden Trust. It is the location of New Zealand's most extensive sculpture gallery.

If you want to find out more about the Waitakaruru Arboretum and Sculpture Park have a look at their website: www.sculpturepark.co.nz

Now here is the good news for WSA members. For the month of November when the arboretum will be at its best, John and Dorothy are offering a two for one entrance fee to WSA members.

Entrance is usually \$10 (over 12s!) so a carload of four can visit the gardens and sculpture for \$20. Take your membership card with you. After 17 years of sweat and scratching John and Dorothy get a bit short with free-loaders. I would too!

And what's on in November? From the 3rd October until 16th November is RE:FRACTION – an outdoor glass sculpture and from 22nd November until 28th February POINT TO POINT SCULPTURE IN THE PARK, guest curated by Dr Carole Shephard, Professor of Fine Arts, Auckland University. The Winter Sculpture Collection will also be on display until 16th November.



Baffin Street Gallery

812 Baffin St, Pirongia Tel: 07 871 9890 www.baffinstreetgallery.co.nz

Print Gallery

Featured Printmaker October 6th—November 30th

Marty Vreede A Journey Reversed

*Also work by 14 printmakers from New Zealand and Scotland
Woodcuts and etchings of Mount Pirongia and NZ birds and trees.
Many other beautiful art pieces to purchase*

*Lavender grown and distilled on the property;
lavender oil and skin products available*

New Opening Times: Sat, Sun, Mon, Tues 10am - 5pm

WaikatoDFAS – Waikato Decorative and Fine Arts Society

WaikatoDFAS are currently initiating membership as an overseas member society of the UK-based National Association of Decorative and Fine Arts Societies (NADFAS) with the intention of establishing a society in Hamilton.

Our aim is to promote and advance appreciation of the decorative and fine arts and the preservation of our cultural and artistic heritage through a series of monthly lectures by NADFAS-accredited lecturers.

The Introductory Lecture will be held at 7:30pm Southwell School Centre for Performing Arts on Thursday 6 November. (Please see advertisement page 2) or further information please contact Angela Dobbs phone 859 1122 or email angela.dobbs@xtra.co.nz or Louise Dobson phone 855 6545 or email ladobson@hotmail.com.

CONGRATULATIONS

There were several Waikato and WSA names to be seen among the finalists and the Salon des Refuses of the 17th Annual Wallace Art Awards.

Among them were Jane Siddall, Frances Van Damen, Mark Curtis, James Ormsby, Paul Judd, Andrea du Chatenier, Ruth Cleland and Simon Esling. Not all members but well done Waikato.

Incidentally, when a few of us went up to Auckland to see the art we visited Rannoch, James Wallace's residence and private art collection.

Maybe it might be possible for WSA to mount a WSA trip during the Wallace Art Awards next year.

BARRY SMITH

WSA COMMITTEE NOMINATIONS

WSA now, more than ever, needs your help to maintain the various initiatives before us.

These include the 75th Anniversary activities for next year, the Community Arts Centre planning which we hope will involve WSA and the myriad of other exhibitions and awards which WSA plays a part in. These are exciting times for WSA and we will need a strong and enlarged team. Please look about for willing helpers (including yourself) for jobs on the Executive Committee and the various subcommittees that include Art Awards, Art School, Events, Exhibitions, Marketing and Publicity, Membership, Premises and Newsletter.

This is an urgent need – not the usual annual request for helpers.

Please submit your nominations and proxy forms to Eriko at the WSA office before Wednesday 8th October. Descriptions of the roles and responsibilities of Sub-Committees is available from Eriko.

PLEASE PAY SUBSCRIPTIONS

In the July issue of Art Connections we inserted a membership renewal form for you to pay your subscription for the year 1 Sept 08 to 31 Aug 09. There are about 130 members who are not currently financial.

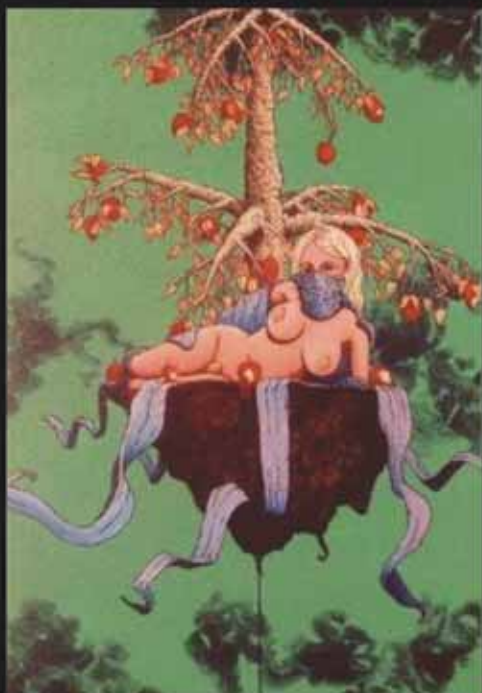
If you are one of these you will have a red sticker on your newsletter

We request that everyone ensure that their subscription is paid before the AGM. If you can't find the form, please contact Eriko on 839 4481 or email wsa@wsa.org.nz and she will post a replacement.

We will soon be taking unpaid members off the newsletter list. If we don't do this we soon become insolvent.

Give a gift subscription to a friend or family member – a creative present that endures for at least a year!

THE EMPIRE GALLERY



A Skeptic's View Hamish Mulvaney

4th - 23rd November
The Empire Gallery
Empire Street
Cambridge

www.empiregallery.co.nz

GRAEME HENRY ON THE WSA ART AWARDS

The WSA was approached in mid-1999, to hold an art award as part of the Summer Gardens Festival in February 2000.

As a contemporary award, the venue taxed the set up and running of such an award, so the Museum offered to host the next contemporary award, which they have done each year since. It is only on the past two years that the Museum have taken over the management of the award, now the National Contemporary Art Award. The awards committee still works as closely as possible, and the prize sponsorship from Trust Waikato is to the WSA.

To keep faith with the Gardens Committee following the first show, it was decided to carry on at the Gardens venue with the New Zealand Painting and Printmaking Award. This award has been held, with the financial help of the Philip Vella Family Trust, each year as well.

The organisation and running of these two significant annual awards, has kept the WSA Awards Committee, and the many supportive volunteers, very busy. Of the committee members, some go back up to forty years of membership and service to the Society. It is through the efforts of the committee persons, that the ongoing sponsorship of the two major prizes was and continues to be achieved, together with other sponsorships to help cover the running costs of each event.

The WSA Awards Committee is not a closed and separate entity. Any member is welcome to join the committee, and help with the various tasks involved with the planning and running of each event. New members on this committee are needed to maintain the continuity and continuance of the awards.

From the outset, the goal of the Awards Committee, and the Waikato Society of Arts, was to present to the

public the best of New Zealand art, to raise the profile of the WSA. It also gives practising artists the opportunity to participate and have their work viewed by competent and qualified judges, with a view to exhibiting to the public with an opportunity to sell. This target has not changed, and any input towards achieving this can only benefit the Society.

GRAEME HENRY

FROM THE WSA ART SCHOOL

Over the school holidays we run our very popular "Art in the Holidays" for children.

For the first time in 18 years Tatiana and I will not be taking it, due to her wedding. However I have prepared the programme (4 weeks!) to keep in line with what we usually do.

The spring term commences the week of OCTOBER 20th and runs to 8th December, so now is the time to start thinking about making art works for Christmas presents.

Another option is attending a printmaking class, either Woodcuts or Etching these classes are ideal if you want to print your own Christmas cards.

Come and enjoy the friendly and informative classes at the Art School:

New class Screen Printing starts November 1st for 6 weeks.

Workshop Cut and Spray stencils Sunday November 9th \$80 9.30-4pm.

SPRING TERM COMMENCES WEEK OF OCTOBER 20TH – DECEMBER 8TH.

ANNE KALNINS

CARRIL KARR TALKS ABOUT SPARK 08

Hindsight is a great thing. How could I have missed Spark in the past? It's been going for 10 years! Finally got there this year— why didn't I go to more of the talks and go to some of the events?

Sponsorship, corporate and individual, including WSA's small contribution, allows Spark to be open and free to anyone who wants to attend. It is a festival of media, arts and design that marks out Wintec and Hamilton. So WSA members, let us support this festival even more next year especially with our attendance.

Martha Simms and I went along, as WSA committee members, to the opening and the introductory talk by designer/ writer/ cartoonist Peter Bromhead. At morning tea after the opening the celebratory cake was decorated in bright pink to a Bromhead design.

Bromhead was great, full of vitality and ideas. I had only known him as a cartoonist so found his history of designing, his international interior design business and his latest career (when does he get the time?) writing children's books amazing.

On the first day I stayed to hear John Harding as well. He is described as an art director and set designer. We were treated to the most interesting illustrated talk about how sets are made, how big things are made to look small and miniature things are made to look big, and parts of things are made to look whole. The illustrations included drew on Lord of the Rings and several other movies he has been involved with. Will I ever see movies in quite the same way again?

Hindsight! I didn't go to anything else until Friday. I am told that the Thursday evening 'Pecha Kucha Night'

was well worth the small entry charge.

I particularly wanted to hear the typographer Kris Sowersby on Friday but went early so I could go to the talks by Australian artists Susan Jacobs and Scott Miles.

Jacobs is an installation artist. Her talk was well illustrated and did give me more understanding of the how and why of installations. Some of her pieces were striking.

Miles trained as a printmaker but has concentrated more on painting since graduating. Initially he gained recognition with postcard size paintings. He has an oblique way of looking at the familiar.

Typography is one of my favourite areas of interest. Sowersby told us not only about the art and craft of typography but about his life as a typographer— his solitary work at the computer, his excitement at meeting his typography heroes. Illustrations were used along with stories to show the development of typefaces for specific applications and also for more general use. His typeface 'National' was recognised at the Type directors Club of New York 2008 annual awards. I went away well satisfied.

— and missed dessert so to say.

The finale of the festival on Friday evening included a performance by Whirimako Black at Waikato Museum.

Spark also included a show called close-up of contemporary contact prints at the Ramp Gallery on Collingwood Street, a film screening 'Highlights of the Palestinian Film Festival' and many workshops.

CARRIL KARR

WSA ART SCHOOL 2008 Spring TERM

Open to everyone - No experience necessary - Discover art- Community based

WSA Art School, Level 1 ArtsPost Building, 120 Victoria St Hamilton

WSA members / high school students: \$15 discount

ENROL BY PHONE (07) 8394481 or FAX (07) 8393869



WAIKATO SOCIETY OF ARTS

CLASSES START WEEK 20th Oct (All courses are 8 weeks unless otherwise stated below)

	MONDAY Classes start 20 Oct	TUESDAY Classes start 21 Oct	WEDNESDAY Classes start 22 Oct	THURSDAY Classes start 23 Oct	FRIDAY Classes start 24 Oct
MORNING	Oils and mixed media Untutored 9.30am-12.00pm \$72 (members) \$62	Oil painting For beginners/continuers Learn skills 9.30am-11.30am \$127 (members \$112)	Intro to Drawing Beginners/continuers 9.30am-11.30am \$127 (members \$110)	Creative Watercolour or acrylics Going further 9.30am-11.30am \$127 (members \$110)	Painting for Beginners + continuers Learn skills for better painting 9.15am-11.15am \$127 (members \$112)
	Photographic Workshop Understanding how your camera works; Digital etc 2 sessions \$32 9.30-1.30 20 Oct +3 Nov	Experimental Printmaking Woodcuts etc. Includes materials 9.30am-12.00pm \$138 (members \$123)	INTERPRETING MAORI ART ...PLUS 10.00am-12.00am \$127 (members \$110)	Pastels for beginners 6 wks 9.30-11.30 \$96 Member \$84	Creative Watercolour Beginners + Continuers Further exercises for better painting 9.30am-11.30am \$127 (members \$110)
		Painters methods, mediums +textures Contemporary exercises + own work focontinuers 9.30am-11.30am \$127 (members \$112)	Painting and Drawing techniques for Continuers +experienced 9.30-12 \$ 137 Members \$122	Etching Includes materials Beginners/continuers Fun to try 9.30am-12.00pm \$138 (members \$123)	SATURDAY SCREEN PRINTING 9.30-11.30 Nov 1st \$ 102 6 weeks , some materials supplied. STENCIL CUT and SPRAY Sund Nov 9 \$60
AFTERNOON	Children's Art 5-7 yrs 7 wks Variety of art materials supplied 4.00pm-5.00pm \$80	Children's Art 8-13 yrs Paint, draw and more Materials supplied 4pm-5.30 \$80	Young Adults 11-15 yrs Skills to improve drawing and painting 4.30 pm-5.30pm \$75	Children's Art 8-12 yrs Paint, draw and more Materials supplied 4-5.30pm \$80	<i>Materials are supplied for the first lesson of adult classes, except for life drawing – please bring large sketch book etc.</i> <i>Materials are supplied for all children's</i>
	Children's Art 7 ½ -11 yrs draw and paint Improves skills 4.00pm-5.15pm \$77			Children's Art 5-7 yrs 7 wks Variety of art, clay painting etc 4.00pm-5.00pm \$80	
EVENING	Experimental Printmaking Includes materials Woodcuts etc, 5.30pm-8.00pm \$138 (members \$123)	Painting for Beginners + Continuers Good skills 6.00pm-8.00pm \$127 (members \$112)	Introducing Art for the absolute beginner Try a variety. 6.00pm-8.00pm \$130 (members \$115)	FEEES TO BE PAID BEFORE CLASS START <i>(or by prior arrangement) Places are not secure until paid. We accept the following payment types: Cash/Cheque/Direct credit/Eftpos/Credit card. A materials list will be given at the first class. Fax your enrolment to: (07) 839 3869 (on white paper), post to: WSA Art School, PO Box 1018, Hamilton, or deliver to Level 1, 120 Victoria St, Hamilton</i> Class Day/time Name..... Ph(day) Ph(evng)..... Address Ph(mob)..... Amount Credit Card (circle one) Visa Mastercard Holders name..... Exp.Date...../..... Card number <i>Children - does your child have special needs?</i> <i>yes / no</i> Signed Date	
	Intro to Drawing Ideal for beginners etc. 6.00pm-8.00pm \$127 (members \$112)	Cartooning For those with basic drawing skills 6-8pm \$96 Member \$84	DRAWING THE HUMAN BODY Beginners/continuers 6.00pm-8.00pm \$127 (members \$112) + model fee \$5 per session		
	Oil painting for beginners + continuers Good skills 6-8pm \$127 (memb\$112)		Etching Beginners/continuers Fun to try Includes materials 5.30pm-8.00pm \$138 (members \$123)		

WSA wishes to acknowledge the support of the following organisations:



TRUST WAIKATO

Waikato Times
As Waikato As It Gets

SHARP

BECOME A MEMBER

Download a membership form: www.wsa.org.nz
Pick up a form from the WSA Office or ArtsPost
Phone (07) 839 4481 to get one sent to you.

MEMBERS' PRIVILEGES

WSA Art School \$15.00 off class fees Full year subscribers only
NZPPA Discount on Entry Fees (\$15 off per entry)
The Empire Gallery 15% on art materials
Whitcoulls Hamilton 10% on art materials
Resene Paint Colourshop 20% on art materials
Victoria Cinema \$9.00 tickets
The Museum Café 10%
Poppie's Bookshop 10%
Canvas Restaurant 10%
Gordon Harris The Art & Graphic Store 10%
Hillcrest Fine Wines 10%
Thornton Gallery 10% framing
Auteur House 10% rental DVDs, Video and purchase of books.
Free 50 words of promotional notice in *Art Connections* per year.

MEMBERSHIP SUBSCRIPTIONS

* New Subscription Rates (1 Sept 2008 – 31 Aug 2009)
Double \$65 (Seniors \$50)
Single \$45 (Seniors \$40)
Student \$20 (Current Student I.D. required)

You can make donations (and pay your subscription) to WSA by post or via the internet.

Our WSA Account is:

Westpac 03 0306 0217827 00 Hamilton North Branch.

GRATEFUL

The WSA is grateful to:

- Trust Waikato for funding towards WSA Administration and Development.
- Bennett Advertising for the design and production of *Art Connections*.
- Warehouse Stationery, Ulster Street for providing the paper for this newsletter. Art and Craft Supplies in-store 8.30a.m. - 6.p.m. Mon-Friday 9a.m. - 5p.m. Saturday & Sunday.
- SHARP for printing the August issue of *Art Connections* and for ongoing help.



DONATE

You can make donations (and pay subscriptions) to the WSA by post or via the internet. Our WSA Account is Westpac 03 0306 0217827 00 Hamilton North Branch.

MEMBERSHIP

As an Incorporated Society, members who wish to 'resign' should notify the society in writing rather than just stopping payment of their subscriptions. We have been contacting several people to remind them of their overdue subscriptions.

Art Connections newsletters, and all the benefits of participating in the WSA now only go to those who have paid their subscriptions.

Please ensure you have renewed your subscription for the current year and remind friends that they may not have paid their subs if they haven't received *Art Connections*.

EDITOR

Barry Smith phone: 07 8558296
Email: 2smiths@wave.co.nz

NEWSLETTER ADVERTISING RATES

Inserts \$75 per page (printed and delivered to WSA)
Full Page \$160 (available only if space available)
Half Page \$80 Quarter Page \$50

What's On and Members short adverts – up to five lines are free.

ECO-NEWSLETTER –

Getting ARTS CONNECTION

Your Executive Committee is always looking at ways to reduce WSA expenditure so we can keep the subs down. We are looking to reduce printing costs, reduce our carbon footprint, and reduce the postage costs. So if you would like to get your newsletter by Email (and earlier) rather than by post, please let Eriko know (839 4481) or Email wsa@wsa.org.nz.

MEMBERS SHOWCASE PAGE

Art Connections will run an occasional Members Showcase Page. This will give WSA members a chance to have their art profiled.

Any members interested please send in a short bio (about 50 words) and a couple of images to Eriko headed "Members Page".

The intention is to run the page, not every month, but occasionally as space allows and as material comes to hand.

We do not promise to coincide it with members' exhibitions, birthdays etc.

CONTRIBUTIONS TO NEWSLETTER

Art Connections monthly newsletter welcomes articles and images relating to the arts, and listings of upcoming art events. All contributions need to be provided by 20th of each month to Eriko Hulse at the WSA office, email wsa@wsa.org.nz. Please type "Newsletter" in subject line.

TAX REBATE

The WSA would like to inform you that our organisation is a registered "Charitable entity".

This means you can claim a rebate for income tax purpose for cash donations of \$5 or more made to the WSA.

Please ask Eriko for a receipt when you make donations to the WSA.

OLD NEWSLETTERS

Just to remind members that if you are after information from old newsletters and have lost your copies, you can view the old newsletters on the WSA website www.wsa.org.nz, click on News, then Newsletters, and then chose the issue you want to view. All this, courtesy of our Secretary, Eriko.

MEMBERS ADVERTISEMENTS

One of the perks of membership is the opportunity to advertise (for free) something of your work or upcoming exhibitions up to 50 words (without enlargement or photos).

WSA EXECUTIVE COMMITTEE

Patron: Joan Fear
Hon. Solicitor: Warren Scotter
Auditor: Grant Mackintosh
Treasurer: Belinda Dorrington
Acting President: Martha Simms
(07) 855 6289
Committee: Alison Gray, Alex McPherson, Barry Smith, Carril Karr, Mark Curtis, Paula Spiers and Sharryn Franklin.



WAIKATO SOCIETY OF ARTS

WSA Office and Art School
Level 1, ArtsPost Building,
120 Victoria Street, Hamilton.
Open 8.30-3.00pm Monday to Friday
Phone Anne or Eriko on 839 4481
website: www.wsa.org.nz