

## PRESIDENT'S REPORT

Martha Simms

Yesterday was the highlight of the 75<sup>th</sup> anniversary celebrations for me. It brought together the Action Front exhibition, the play, *This Green Land*, and the afternoon tea for the audience of the Saturday matinee performance most of whom had received vouchers. This was our chance to honour the members who were stalwarts of the WSA in its glory years when WSA had the strongest position supporting the arts in Hamilton.

*This Green Land* by Campbell Smith was a roaring success by all counts. All four performances were sold out, with many people calling up on the day to find out there were no places left. The fine production, directed by Alec Forbes, was effective and moving in its intense focus on Margot.

We want to thank the museum for their collaboration and support in this project. Sarah Oliver was indefatigable in working to make this production a success. The help and advice of HCAC is much appreciated. We also want to thank our sponsors, Creative New Zealand, the Foreman Family, Chartwell Trust, the Waikato Museum, and Remains to be Scene who made it possible.

The gathering of old friends from far and wide at the matinee tea delighted me. There were those who were close to Margot Philips and those who contributed through long membership or stalwart service to WSA. (I'm sorry if I missed out on sending to some who deserved it. Those who called me even a week in advance got vouchers.) After the greetings and the catching up on old friends, a number of speakers told anecdotes about Margot, who was clearly a lovable and humble person. Cecily MacShane opened and closed with piano music that Margot loved.



Lester remembers Margot: Ruth and Lester Davey, Ian Kaywood, and Glynis du Chatnier. Enid Claris in front of Lester

In his speech Rob Gardiner reminded us of the large number of accomplished artists who were exhibiting in Hamilton over the years. This brought to my mind Ann McEwan's talk to the Friends of the Museum recently in which she pointed out the difficulties of doing research on Waikato artists because of the lack of high

quality images and information available.

We know that over a long period the *Waikato Times* and more recently the *Hamilton Press* have faithfully reported local exhibitions and artists. However that information is not widely available to national writers on art. Except for the artists who have achieved recognition at the national level, Waikato artists aren't given due recognition for their achievements.



Campbell Smith, Mary Foreman, Bill Foreman, Heather Lomas, Rob Gardiner, Nancy Bracey, Noeleen Nuttall, Ann Sayers, man in foreground is Bill's son.

Though Waikato Society of Arts has existed to exhibit, support and encourage Waikato artists, they are only just entering the information age through the upgrade of its website and making available a web page for each current member. We are endeavouring to provide a place to exhibit and sell on line, but also to create an archive of Contemporary Waikato Artists.

I propose that a joint endeavour by HCAC, Arts Waikato, the Waikato Museum and the Waikato University and WSA can help rectify some of the omissions of the past in two ways. A professional archive can be set up to record the images from Waikato artists from the past century so there is a record that can be accessed by researchers, investors, and art lovers. A joint application seeking funding from Creative New Zealand and other regional funders to support this archive will ensure both that appropriate research is done by an art historian and that high quality images of major works are preserved. In addition, scholarships should be available to fund graduate students for research into Waikato artists. A few well-supervised theses would add depth to the history and analysis of Waikato artists.



Continue to P.8

## ANNUAL GENERAL MEETING

The AGM of WSA will be held on Thursday 22nd October at 7pm at Arts School Classroom. Details later.

### WSA EVENTS FOR 2009

#### AUGUST:

Celebratory 75th Dinner 6.45pm 27th August at Windows at Avalon

#### SEPTEMBER:

The Action Front Panel Weekly Meeting Series and Workshops\*

See separate item

Youth Art Awards 18th September

#### OCTOBER:

Waiprint Exhibition

#### NOVEMBER:

Members Exhibition opening 5th November

## EXHIBITIONS AT ARTSPOST GALLERIES AND SHOP

### 7-31 AUGUST 2009

OPENING PREVIEW 6 AUGUST AT 5.30PM

#### CONTEMPORARY EXHIBITIONS

VARIOUS CONSTRUCTIONS AND DRAWINGS

PAUL JUDD, NELL NUTSFORD, JILL SORRENSEN, LYNDA WILSON

#### DELINEATE

HEATHER BRAMWELL, LORRAINE PEMBERTON AND CAROLE SHEPHEARD

#### WASTED

GAYE JURISICH

#### C'BON

FASHION BY JEAN CARBON

## 75TH ANNIVERSARY BANQUET

*Guest Speaker David Hyams CEO Art Waikato.* Remember this special occasion for celebration will take place at Wintec Windows, Avalon at 6.45pm on August 27th. Your WSA Exec Committee has chosen this venue because of its reputation. A delicious meal can be had for about \$30/head. Please confirm your place by **RSVP together with the \$15 booking fee urgently.** **\$10 of this fee is deducted from the cost of your meal – which you pay at the end of the evening.**



We will also launch the continuation of the history of the WSA by Megan Lyon, announcement of new life members; some nostalgia and some looking forward to the exciting future of WSA. All this and exquisite food at Windows on Avalon on Avalon.

## WSA STRATEGIC DEVELOPMENT PLAN

WSA Executive committee has formulated and approved a Strategic Development Plan with help from Meliors Simms and Joan Travaglia. It includes many initiative for the future of WSA. The plan is too large to include in the newsletter but members can obtain a copy by contacting Eriko Hulse or Martha Simms.

## FROM THE WSA ART SCHOOL

Enrolments are looking good for the winter term, perhaps a chance to beat the recession blues!! Over the school holiday we ran our usual art in the holidays programme. This introduces children to a wide variety of mediums. Our activities are really good with a lot of time going into producing in depth work for the children to do. We receive much praise from parents, which is most encouraging.

Anne Kalnins

## CONGRATULATIONS TO BARBARA VON SEIDA

Barbara von Seida entered paintings in each of two national art awards, the Peters Doig Marlborough Art Award in Blenheim where the judge was JS Parker, and the Wai Art awards in Carterton where the judge was Richard Ponder. Barbara had her entry chosen as a Selected Finalist in Blenheim. At Carterton, Barbara's entry "Landscape 2008/5" (Oamaru Bay) received a Highly Commended Award.

## SPARK

Very soon - highly recommended  
3rd to 7th August at Waikato Polytec

**Film:** Marina Goldavskaya (director), Guto Barra & Beco Dranoff (director/producer *Beyond Ipanema*), Ondotzero motion graphics screening

**Visual Art:** Nicky Deeley (contemporary art), Paul Seawright (photographer), Sara De Bondt (graphic design), John Pule (writer, printmaker, artist)

**Music:** Sing Songs (band), *Beyond Ipanema* (film), Morgan Samuel (post-production)

**Fashion/Interior Design:** Vee Smit (interior design), Denise L'estrange Corbet (World)

**Journalism/media:** Helen Baxter (digital media), Carly Flynn (TV presenter)

Theatre: Sam Scott & Wes McDowdell (Massive Company) (Plus much, much more – including Pecha Kucha night, Media Arts graduate showcase, live music & international DJs, art exhibitions, The Special Group (graphic design) and two NZ film premieres!)

Details at <http://www.spark.net.nz>

And there are hundreds of brochures about town.

## 2009 WSA MEMBERS EXHIBITION 5TH NOVEMBER TO 1ST DECEMBER

This exhibition is our main WSA Members Exhibition for the year and will replace the Xmas Exhibition. We will occupy the three rooms of Galleries of Arts Post. It will encompass all genres of work; prints, painting sculpture and others. If members have special requirements such as plinths etc please let Eriko know by 15 October. Entry forms must be in by 23rd October. The works must be delivered by the 2nd November in time for the opening on the 5th November. The Exhibition will also include a few invited entries. The entry forms will be sent out with the October newsletter. Opening: 5th November – and the Exhibition will run until 1st Dec.

## 2010 WSA MEMBERS EXHIBITION

WSA is looking for suggestions for a theme for this exhibition – suggestions members? Phone Martha or Eriko

## ADVERTISING

The Newsletter is down on advertising at present. If any members can direct us to advertisers please let Eriko know. Although our circulation is not huge, the ads do go to a target audience.

## MEMBERSHIP SUBSCRIPTIONS

Just another friendly reminder about your subscription. Please pay before 1st September. WSA offers real value for money – reductions on art class fees, photocopying, web pages for members, discounts from our supporting businesses and many more.

## PHOTOCOPIER USAGE BY WSA MEMBERS ONLY

WSA's new photocopier prints Arts Connections now and is available to members.

Casual rate (GST incl.)

B/W A4 10c

B/W A3 20c

Colour A4 \$1.00

Colour A3 \$2.00

Standard photocopier paper is supplied by the WSA. Photocopier (self) service is available 8:30am –3pm (Mon-Fri)

Contact Anne or Eriko for authorisation (need to enter casual ID number). Contact Eriko for the lead-time and quotation for bulk copying.

## 2009 NATIONAL YOUTH ART AWARD

18th September

WSA is organising this major award for youth art. There will be plenty of advertising in the coming months but the important information members should know at present is the closing date **has been extended to 1st September** and youth is 27 years of age and under. The curator and judge will be Pauline Lewis. Full information at the WSA website [www.wsa.org.nz](http://www.wsa.org.nz)

## “SHOW AND TELL”

Two things arose from our first meeting. The first was that members appreciated the social contact within WSA. We will continue the series as long as we have members prepared to come and also volunteers prepared to facilitate the get togethers. Our next meeting will be an evening one as part of a Gordon Harris demonstration in September – see next item.

The second was the expressed desire among the printmakers to continue meetings on printmaking matters. There is no denting the passion of printmakers in WSA.

And members. Please support these meetings – we need someone (or more) to act as an organiser for these 'get togethers'. This is a small job which won't take much time.

## FROM GORDON HARRIS

“Gordon Harris, 386 Angelsea St, will be holding a customer demo on NORMA oils on Wednesday 9th September. See in their advertisement on P. 8. This is be-

ing held after-hours. This is to introduce the NEW range of Schmincke Norma oils. Numbers for catering need to be confirmed. Please contact Steve at Gordon Harris for details. Ph 07 834 3952 or email [hamilton@gordanharris.co.nz](mailto:hamilton@gordanharris.co.nz) More in September newsletter. Please note that a RSVP is required.

## WALKER AND HALL WAIHEKE ART AWARD 2009

Submissions now open.

Closing date Monday 7th September 2009. Guest Judge: Dr Ed Hanfling. Selection and judging through a double blind process with no artist identification available to the judge. Information and application form available at [www.waihekeartgallery.org.nz](http://www.waihekeartgallery.org.nz). Prize of \$5000 with additional merit prizes.

## MCCAHOON HOUSE ARTIST'S RESIDENCY PROGRAMME

The McCahoon House Trust is calling for applications from professional artists to the McCahoon House artist's residency programme. Three month residencies between March 2010 and March 2011 will be offered to artists who have already received critical acclaim. Applications close 31 August 2009. For more information and to download an application form, see their website [www.mccahoonhouse.org.nz](http://www.mccahoonhouse.org.nz).

## ‘WAIPRINT 2009’

Guest artist Kate Hill

This, the 20<sup>th</sup> annual Waikato Society of Arts, printmaker's exhibition will be on show at ArtsPost Gallery from 02 October - 02 November 2009.

The opening event will be on Thursday 01 October from 5 30pm and it will be open to the general public at no charge. All welcome come and bring your friends

‘Waiprint 2009’ is a Waikato Society of Arts, member's exhibition.

All member's of the society and students of the WSA Art School can submit works for this selected show. Two artworks can be submitted. **Deadline for entries will be 16th September 2009.**

There will be approx. 35-45 prints on show and these can include techniques such as etching, drypoint, mezzotint, woodcut, monoprint, wood engraving, screenprint, digital and mixed media methods.

Our guest artist this year is Kate Hill a mixed media printmaker who uses print, paint, stitch and digital techniques in her work. During the 90s Kate developed ways of working without a press. More recently the acquisition of an Edward Snowden etching press has seen the inclusion of block and monoprint methods.

For ‘Waiprint 2009’ a series of prints on canvas will be shown. The theme is ‘Restoration’ a reflection on the many backbreaking hours of toil worked to return a local gully part of the “Te Awa o Katapaki esplanade” to its former glory.

Kate will be offering a ‘1 day workshop’ **Printing without a Press** on Sunday 04 October at the WSA Community School of Arts Print Studio, ArtsPost building basement, 120 Victoria St, Hamilton.

Barry Smith

I have to admit that when I heard about the Maori gardens proposed for the Hamilton Gardens I was concerned that they wouldn't compare favourably with what had gone before in the gardens. How pleasantly surprised I've been with this latest development and to know that my fears were groundless. Like everything else that has happened with the unfolding of these gardens it has been so impressive. Every time I visit the Hamilton gardens – and I've been here since the days when it was a rubbish dump – there seems to be something new. In fact I'm not looking forward to the day when they declare the gardens finished. Hopefully that will never happen. Long may the Hamilton gardens grow and expand!

You enter the 'pathway of proverbs', Te Ara Whakatauki, from the Piazza and pass many plants of pre-European significance. Along the pathway are the many plants utilised but not necessarily eaten by Maori. Near the Piazza is the *Pomaderris* plant representing the poles on which the Tainui was slid across the Auckland isthmus to the Manukau Harbour from the Tamaki River before its journey to Kawhia. Also just beyond the Piazza is a pohutakawa representing Tangi te Korowhiti the still-living pohutakawa to which the Tainui was tied when it first arrived at Kawhia. Not far down the pathway is a Pou representing Hoturoa who was the high priest of the Tainui canoe. His image has been carved in the ancient Tahitian style, recognising the origins of Tainui.

The pathway leads you to the impressive carved entrance, the Waharoa, to the cultivated garden. These carvings are based on those that existed on a famous wharenui at Te Awamutu. The figures on the lintel (Pare) and the supporting poles (Pou Tumu) represent old stories of spirit people of the local hills and mountains and their activities at night, disguised as mist, capturing women and the heroic recapturing of wives from these spirit folk



(Tahurangi). This magnificently carved Waharoa represents the official entrance-way to the gardens. In pre-European times the Waharoa was the entranceway to the upper levels of a Pa and had particular significance in the mana of a hapu and its defence. Beyond the Waharoa, Te Mara, the second stage

of the garden, has been open for a year now. It is the area beyond the 'pathway of proverbs', Te Ara Whakatauki, and represents the traditional Maori garden. It is sited on the original pa site, Te Parapara. Over last summer the main crop was kumara grown in the central area. It has now been harvested. About the kumara area are growing other useful plants or crops of Maori, bracken fern (aruhe), karaka, keikei, members of the gourd family and taro to name a few. In Te Mara is the Pou representing Taunga ki Te Marangai who was one of the crew members of Tainui and who established the first gardens on the Waikato. His face overlooks the kumara plantings. His face was also to be seen on banners about the gardens.

Also in Te Mara is a fine Pataka or whatarangi, a storehouse for food. This magnificent whatarangi is richly decorated with gable figures (known as tekoteko) The main body of the whatarangi is called the kauhanga (hull) and is carved from a single totara log in the manner of a waka hull.

About Te Mara is the protective palisade and standing along the length of this are the ancestral figures, the Pouwhakarae, with their names carved into the post. They act as a warning to potential invaders.

Most of you will have visited Te Parapara but give it another visit, take in some more of its significance and the seasonal changes. Like the rest of the gardens it is a changing landscape and you will learn something new each time you visit. Matariki has just passed so work should be in progress for the next seasons crops.

The cultural advisor to the Parapara garden trust is Wiremu Puke. The carvings were all hand carved at a workshop in Kihikihi by Sam Roa and Shane Tamaki using, where possible, stone chisels and adzes.

It is over 140 years now since the forced evacuation of this Pa site. At last there is recognition of this early part of our cultural heritage with the construction of Te Parapara and the several commemorative Pou and other structures at Kirikiriroa and various other Pa sites about the Waikato.

Barry Smith

with help from [www.hamiltongardens.co.nz](http://www.hamiltongardens.co.nz)



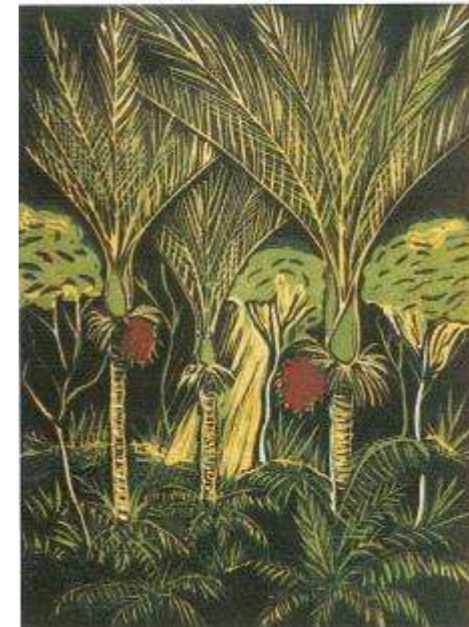
Ruth Davey

The vitality and persistence of a society is due to the driving force from within its membership. With the recent death of Rona Swallow at 88 years we are moved to recall her role and achievements in the earlier days of the WSA. Rona was a woman of great energy, hardworking, outspoken and encouraging. She was a keen advocate of the WSA School of Art which was set up at the Studio Gallery in Angelsea Street.



Letterbox Print – Rona Swallow

She was a special supporter of printmaking when our group built up facilities in the classrooms, starting with a converted mangle press.



Nikau Palm Print – Rona Swallow

Rona later became a committee member and vice president. She initiated the Left Bank Festival a favourite event at the riverside near the Band Rotunda, where a band played, artists displayed their work, drew portraits, and where children joined a painting group on a ground sheet. (see Rob Gardiner's drawing "the Dogs" in the Action Front exhibition".) This was the precursor of the Right Bank Festival at the Gardens today. Rona worked in drawing, watercolour, but relief printing, linocuts and woodcuts and etching based on the contents of her sketch book were her main passion.

A keen adventurer she often talked of saving up for the next trip. With her husband Cliff, (and later alone) Rona travelled to the far reaches of the world.

In 1978 they moved to Kerikeri where she set up a print studio for her own work and for teaching. She became president of the Kerikeri Art Society and exhibited widely, many of her images coming from the landscape of the Bay of Islands.

Disturbed by the plight of refugees she saw in Malaysia, she sent drawings and prints on an auction tour to raise money for 'Operation Rescue'

She never gave up. After treatment for cancer she was determined in her words "to get back to the studio, make more prints, take a trip, fly a balloon" which she did at aged 80.

Lynne Robinson, her daughter, also well known in the Waikato art world, has edited her lively memoirs as 'Rona's Story' Here I learned how, encouraged by John Weeks who noticed her youthful enthusiasm for drawing, she attended the Elam School of Art as a junior student. That she worked at 16 for a photographic studio as a colourist, and when war broke out she trained as a nurse in Dunedin. There was a spectacular episode during her travels when she found herself on an ice breaker sailing through a tropical storm. That sounds like Rona, and thanks to that sort of initial energy and joyfulness, Printmaking is still going strong here today. You can see her work in the "Action Front 'Exhibition, two embossed linocuts with blended surface rollup.



Rona Swallow – with some of her prints

Ruth Davey. July '09

## ACTION FRONT

a series of weekly public lectures and panels on aspects of art

### **Saturday 12 Sept**

**11am**

*'the long and the short of it...* 'WSA members speak of the history of their organization.

Convened by Joan Fear

Free Entry – Waikato Museum Lecture Theatre

### **1pm** Portrait Tips and Tricks

Joan Fear leads a workshop on the tips and tricks on creating a successful portrait. Bring your own materials.

ArtsPost

\$10 - call 839 4481 to book

### **Saturday 19 Sept**

**11am**

Living the Artist's Life

Gay Jurisich, James Ormsby, Zena Elliott

Free Entry – Waikato Museum Lecture Theatre

### **Saturday 26 Sept –**

*A passion for Printmaking*

Convened by Janice Meadows

**11am**

Free Entry – Waikato Museum Lecture Theatre

### **1pm** The Magic of Printmaking – at the printroom.

Come and learn to do a simple monoprint with Joan Travaglia; a great introduction to printmaking. \$10

## NZPPA NEWS

The great news is that the Vela Family Trust has increased their generous sponsorship and the NZPPA prize has been increased from \$15 000 to \$20 000!

Members will also be interested to know that the judge for the 2010 NZPPA will be Dr Leslie Duxbury from the School of Art, Royal Melbourne Institute of Technology.

WSA printmakers will be interested to know that Dr Duxbury has a major interest in printmaking. Closing date for entries will be 19 October 2009.

## IMPROVING THE WSA WEBSITE

Thanks to a Trust Waikato Development Grant, we're improving the WSA website to make it a more effective tool for communication and marketing. We're working with Enlighten Design (the company that hosts our website) to expand the capacity for displaying images, add some new pages, and track how people are viewing the website. (This tracking information will be useful for future grant applications.) We'll now have a separate page for our new Business Membership. The other big addition will be pages for each of our members to display and sell their work.

Last month, art historian Ann McEwan spoke to the Friends of the Museum about the development of a Waikato regional style. She discussed the importance of documenting the practices and recording the images of regional artists for archives and research. She began her remarks by commenting on her difficulty in finding images online of 'Waikato' art.

The ones that she did find included a few WSA members,

but missed out many of our talented artists. Our new members' pages will help fill the gap as far as Waikato artists are concerned, and will help raise the profile of art in the Waikato and New Zealand.

The new artists' pages go on the website at [www.wsa.org.nz/artists.aspx](http://www.wsa.org.nz/artists.aspx).

Each artist's page has a short paragraph about the artist and their work (including a bit about exhibitions and awards), contact information, and 6-12 images of work together with details about each work (title, medium, size, price). If you want to sell your work via the website, you must deal directly with your buyer, including fielding all enquiries. (If someone mistakenly contacts Eriko, she will just forward the query to you.)

An artist's page is a benefit for WSA members only: your subscription must be up to date before we can create your page. To get started with your own page, email Janice Meadows at [jmeadows51@gmail.com](mailto:jmeadows51@gmail.com) and she will reply with a registration form and further instructions.

**Janice Meadows**

## TRUST WAIKATO NATIONAL CONTEMPORARY ART AWARD 2009

This is a prestigious, national award in what will be a significant event in the 2009 art calendar.

The judge is Charlotte Huddleston who is the Curator of Contemporary Art at Te Papa Tongarewa the Museum of New Zealand. Huddleston is a well-known curator and essayist. Significant curatorial projects include Mostly Harmless: a performance series and Linked: connectivity and exchange both presented at the Govett-Brewster Art Gallery.

**The finalists' work will be on display at the Waikato Museum from 5 September 2009 until 25 January 2010.**

## CONTRIBUTIONS TO NEWSLETTER

Art Connections monthly newsletter welcomes articles and images relating to the arts, and listings of upcoming art events. All contributions need to be provided by 20th of each month to Eriko Hulse at the WSA office, email [wsa@wsa.org.nz](mailto:wsa@wsa.org.nz). Please type "Newsletter" in subject line.

## TAX REBATE

The WSA would like to inform you that our organisation is a registered "Charitable entity".

This means you can claim a rebate for income tax purpose for cash donations of \$5 or more made to the WSA.

Please ask Eriko for a receipt when you make donations to the WSA.

## MEMBERS ADVERTISEMENTS

One of the perks of membership is the opportunity to advertise (for free) something of your work or upcoming exhibitions up to 50 words (without enlargement or photos)

## BECOME A MEMBER

Download a membership form: [www.wsa.org.nz](http://www.wsa.org.nz)

Pick up a form from the WSA Office.

Phone (07) 839 4481 to get one sent to you.

## MEMBERS' PRIVILEGES

- WSA Art School \$15.00 off class fees per term (Full year subscribers only)
- NZPPA Discount on Entry Fees (\$15 off per entry)
- Whitcoulls Hamilton 10% on art materials
- Resene Paint Colourshop 20% on art materials
- Victoria Cinema \$9.00 tickets
- The Museum Café 10%
- Poppie's Bookshop 10%
- Canvas Restaurant 10%
- Gordon Harris The Art & Graphic Store 10%
- Hillcrest Fine Wines 10%
- Thornton Gallery 10% framing
- Auteur House 10% rental DVDs, Video and purchase of books
- Free 50 words of promotional notice in "Art Connections" per year

## MEMBERSHIP SUBSCRIPTIONS

New Subscription Rates

(1 Sept 2008 – 31 Aug 2009\*)

Double \$65 (Seniors \$50)

Single \$45 (Seniors \$40)

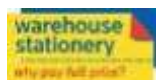
Student \$20 (Current Student I.D. required)

You can make donations (and pay subscriptions) to the WSA by post or via the Internet. Our WSA Account is: Westpac 03 0306 0217827 00

## GRATEFUL

The WSA is grateful to:

- Trust Waikato for funding towards WSA administration and development.
- Perry Foundation for funding support for the WSA School of Art
- Warehouse Stationery, Ulster Street for the paper for our newsletter.
- Sharp for printing part of the colour of Art Connections and for ongoing help



Please ensure you have renewed your subscription for the current year and remind friends that they may not have paid their subs if they haven't received Art Connections.

## TAX REBATE

The WSA would like to inform you that our organisation is a registered "Charitable entity".

This means you can claim a rebate for income tax purpose for cash donations of \$5 or more made to the WSA.

Please ask Eriko for a receipt when you make donations to the WSA.

## NEWSLETTER ADVERTISING RATES

Inserts \$80 per page (printed and delivered to WSA)

Full Page \$240 (available only if space available)

Half Page \$120 colour \$70 black and white

Quarter page \$70 colour \$40 black and white

What's on and Members short ads – up to five lines are free.

WSA Art Connections will be every two months with a black and white flier with only quarter page adverts on the between months.

## ECO-NEWSLETTER – GETTING ARTS CONNECTION

Your Executive Committee is always looking at ways to reduce WSA expenditure so we can keep the subs down. We are looking to reduce printing costs, reduce our carbon footprint, and reduce the postage costs. So if you would like to get your newsletter by Email (and earlier) rather than by post, please let Eriko know (8394481) or Email [wsa@wsa.org.nz](mailto:wsa@wsa.org.nz).

## MEMBERS SHOWCASE PAGE

Art Connections will run an occasional Members Showcase Page. This will give WSA members a chance to have their art profiled.

Any members interested please send in a short bio (about 50 words) and a couple of images to Eriko headed "Members Page".

The intention is to run the page, not every month, but occasionally as space allows and as material comes to hand. We do not promise to coincide it with members exhibitions, birthdays etc!!

## WSA OFFICE AND ART SCHOOL

Level 1, Arts Post Building,  
120 Victoria Street, Hamilton.  
P.O. Box 1018 Hamilton, 3240  
Open 8.30-3.00pm Monday to Friday  
Phone Anne or Eriko on 07 839 4481  
Website: [www.wsa.org.nz](http://www.wsa.org.nz)

## EDITOR

Barry Smith phone: 07 8558296  
Email: [2smiths@wave.co.nz](mailto:2smiths@wave.co.nz)

## WSA EXECUTIVE COMMITTEE

Patron: Joan Fear  
Hon. Solicitor: Warren Scotter  
Auditor: Grant Mackintosh  
Treasurer: Maiqing Zhou  
President: Martha Simms 07 8566981  
Committee: Alex McPherson, Barry Smith, Carril Karr, Martha Simms, Paula Spiers  
Secretary: Eriko Hulse [wsa@wsa.org.nz](mailto:wsa@wsa.org.nz)

## DONATE

You can pay your subscription or make donations to WSA direct or via the Internet.

Our WSA Account is: Waikato Society of Arts Inc. 03 0306 0217827 00 Westpac Bank.

## MEMBERSHIP

As an Incorporated Society, members who wish to 'resign' should notify the society in writing rather than just stopping payment of their subscriptions. We have been contacting several people to remind them of their overdue subscriptions. Art Connections newsletters, and all the benefits of participating in the WSA now only go to those who have paid their subscriptions.

From P.1

This year WSA will be seeking sponsorship for a quality digital camera dedicated to recording the works of WSA members for an on-line archive.

I would like to remind members to renew memberships, book for the banquet, prepare works for the Waiprint Exhibition in October and the open members exhibition in November, and to remind the talented young people in their life to enter the National Youth Award Exhibition by 1 September.

Now that WSA is in renewal mode, not just survival mode, I would like to invite more people to join WSA committees. So many new services and events are underway, now is the time to contribute your ideas and energy into an organization that supports artists and art lovers. A number of interesting executive responsibilities, including president, are open for those who would like to shape the future directions of WSA.

We need individuals to become involved:

- Planning and leading exhibitions including exhibitions outside of ArtsPost;
- Helpers with running the New Action Front;
- Helpers for club nights and noons, (say five people each convening twice);
- Newsletter writers, and layout etc.
- Finding and developing a new premise for WSA
- PR and marketing;
- Social and speaker committees;
- Liaison with other arts groups such as Arts Waikato
- Fundraising
- Co-ordinating independent exhibitions

*Martha Simms*



Photos: The Play "The Green Land" by Campbell Smith

## NEW AND IMPROVED

### Schmincke NORMA OIL COLOURS



TRY NOW  
with our  
intro offer **20% OFF**

The favourite oil colour of many NZ artists, Schmincke Norma has been reformulated to take advantage of the latest technical developments.

Increased pigment load has resulted in more concentrated colour. The Range of **84 colours** represents the most modern colours available. Includes 3 metallic hues and special unique colours. Maximum **4-5 star lightfastness** for all colours. **Drying time** has been shortened across all colours. **New lower price** on cadmium and cobalt colours.

#### LAUNCH AND DEMONSTRATION EVENING

We take pleasure in inviting you to attend a launch and demonstration of the New Schmincke Norma Oils, being held soon at your nearest Gordon Harris store. Evan Woodruffe will be discussing and demonstrating the Norma Professional range of oil colours, including their mediums and turps-free oil painting. Registration from 5:30pm, demonstrations start at 6:00pm and finish at 7:30pm. Drinks/nibbles will be provided. RSVP is essential—seats are strictly limited. RSVP to Shelley Foreman ph: 09 520 8595 or email: shelley@gordonharris.co.nz

Wednesday 9th September, 5:30pm, at Gordon Harris Hamilton store, RSVP essential

#### HAMILTON

386 Anglesea Street, Corner Casabella Lane

TEL 07 834 3952 **OPEN 7 DAYS**

Special offer ends 30th September 2009, while stocks last

**Gordon Harris**  
THE ART & GRAPHIC STORE